

Sports/Recreation





Alex Eligh Community Center

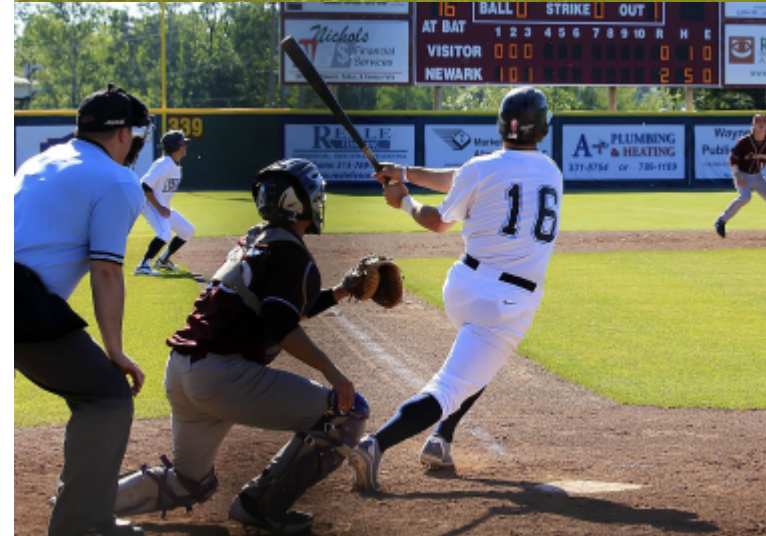
303 East Avenue,

Phone: (315)-331-2532,

Executive Director: Michael J. Muscolino

Open Monday through Friday 9:00 a.m. to 4:30 p.m. and 6:00 p.m. to 8:30 p.m.

Open Saturday 1:00 p.m. to 4:30 p.m. and 6:00 p.m. to 8:30 p.m.



[View Slideshow](#)

Baseball - Newark Pilots

Colburn Park,
1160 East Union Street,
Website: www.newarkpilots.com

Baseball is in Newark to stay and it's bigger and better than ever as the Pilots return for another year in the Perfect Game Collegiate Baseball League. They won the PGCBL championship in 2011 and consistently finish near the top of the league in attendance by having over 27,000 fans come through their gates per year. And if the exciting baseball action isn't enough, fans of fun-filled night of entertainment that contains and a mascot.







Bowling Lanes - Doug Kent Rose Bowl Lanes

725 West Miller Street,

Phone: (315)-331-2007

[Website](#)

[View Slideshow](#)

Doug Kent's Rose Bowl Lanes is a 36 lane facility located here in Newark. It is owned and operated by 10-time PBA Titlist Doug

Kent. Your family can enjoy a fun, clean, smoke-free bowling environment with something to do for everyone! There is an arcade, with a golf simulator, corn hole, and the First Glass Wine Bar!



Cross Country Skiing - Erie Canal Path

The path along the Erie Canal is a perfect place to jog, ride a bicycle, or go for a stroll. In the winter, many residents enjoy cross country skiing on the canal path.

Please also check the [Newark High School schedule](#) if you are interested in watching a high school game of sports.

A [Walking Map](#) has been developed showing businesses and attractions within the Newark area to provide information for boaters as well as other visitors. The map can be found at the Visitor Center as well as other locations throughout the Village of Newark.

Nearby Sports

- [Brantling Ski Slopes](#), Sodus, NY : 20 minutes
- [Bristol Mountain Ski Resort](#), Canandaigua, NY: 45 minutes
- [Cycling the Erie](#), Information and recommendations for those cycling along the Erie Canal
- [Finger Lakes Casino and Racetrack](#), thoroughbred racing, Farmington, NY : 25 minutes
- [Fishing in the Finger Lakes](#) : 30 minutes South or on [Lake Ontario](#): 30 minutes North

- [Geneva Bicycle Center](#), bicycle rentals, Geneva, NY: 30 minutes
- [Newark Rod and Gun Club](#): 5 minutes
- Ray J's: Motorcycle parts and accessories, minor bicycle repairs, 527 East Union Street, (315)-331-1340
- [Upstate BMX](#), bicycle course/racing: 5 minutes
- [Watkins Glen International](#) Nascar Racetrack, Watkins Glen, NY: 1 hour, 20 minutes
- [Williamson Flying Club](#), Williamson-Sodus airport: 20 minutes